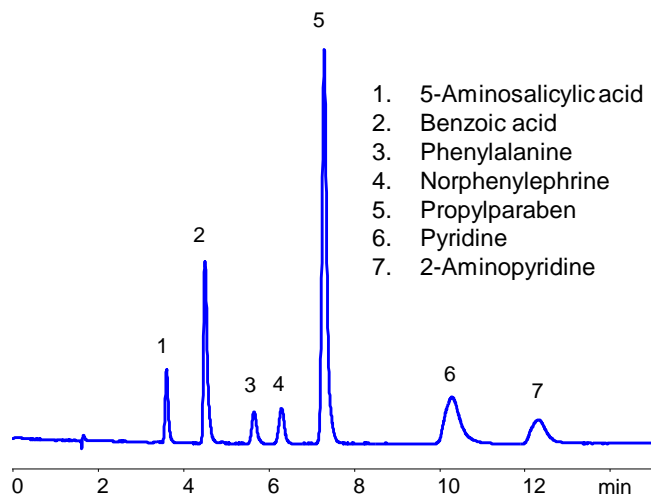


Learn to Read Between the Chromatography Peaks



Column:	Coresep 100
Column size:	4.6 x 150 mm, 2.7 μ m, 90A
Mobile phase:	30% ACN with 0.02% H_3PO_4
Flow rate:	1 ml/min
Detection:	255 nm

Application Notes

Often, people look at our mixed-mode applications and say “I am not separating compounds A, B, C like in your application - I’m separating something completely different”. Believe us, we know that few people are actually separating compounds A, B and C. Instead, we are looking at the results differently - we promote selectivity of separation based on the functional groups in your compound. Don’t worry that it’s not your exact compound, but look at your molecule in terms of functional groups which define mechanism of interactions. If you control your interactions - you control your method. So if in our application you see the following compounds, don’t dismiss the application - try to analyze what you see:

5-Aminosalicylic acid - a hydrophilic zwitterionic
Phenylalanine - a hydrophilic zwitterionic compound
Norphenylephrine - a hydrophilic basic compound
Pyridine - a slightly hydrophilic basic compound
Benzoic acid - a hydrophilic acidic compound
2-Aminopyridine - a hydrophilic basic compound
Propylparaben - a hydrophobic neutral compound

The same is true for mobile phase selection. If you see some acid or buffer in our description, know that you can replace it with a buffer of your choice (obviously depending on your detection technique). Just try to understand the effects of pH and concentration of ions on your separation.

So next time you look at one of our methods, please don’t dismiss it outright if these are not your compounds, or the mobile phase is not compatible with your detection technique - just read between the lines, or as we say “read between the chromatography peaks”.