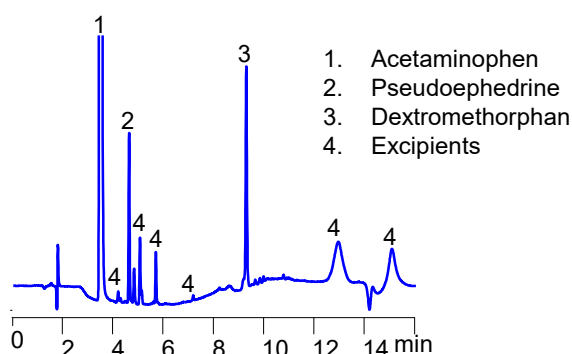
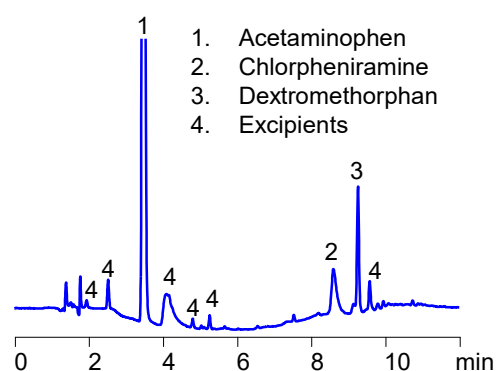


## HPLC Analysis of Cough, Cold and Flu Formulations in Mixed-Mode Chromatography

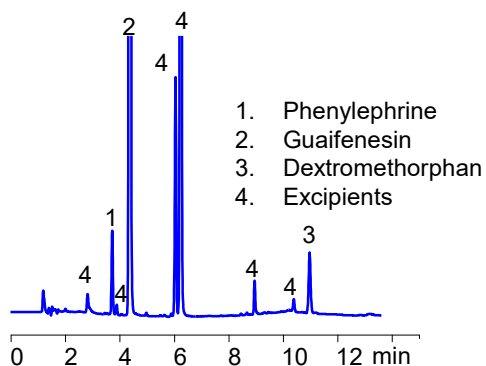
### HPLC Analysis of Vick's Dayquil Cold and Flu Multi Symptoms Liquid Caps



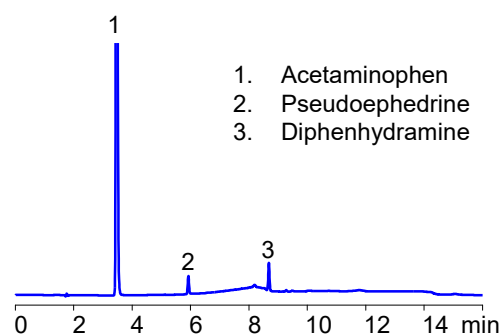
### HPLC Analysis of Vick's NyQuil Cold and Flu Formulation



### HPLC Analysis of Mucinex Severe Congestion & Cough Formulation



### HPLC Analysis of Wal-Dryl Allergy & Sinus Headache Formulation



**Column:** Coresep 100  
**Dimensions:** 4.6x150 mm  
**Mobile phase:** ACN/Water/H<sub>2</sub>SO<sub>4</sub>  
**Flow rate:** 1 ml/min  
**Detection:** 275 nm

## Application Notes

Cough, cold, and flu formulations are complex mixtures of active ingredients and excipients with different hydrophilic, hydrophobic, and ionic properties. It is a combination of hydrophobic basic, hydrophilic basic, acidic and neutral compounds. They can be analyzed in one run with mixed-mode columns, like Coresep 100. The retention time of compounds with various properties can be controlled by modifying mobile phase composition. Additives like acids and buffers can be used to accommodate the desired detection technique (UV, ELSD, mass spec, etc.). A general and unified approach can be developed for multiple formulations. If you have tough applications just ask us and we gladly, do it for you within a couple of days. Learn more at [www.helixchrom.com](http://www.helixchrom.com).