

2021-10

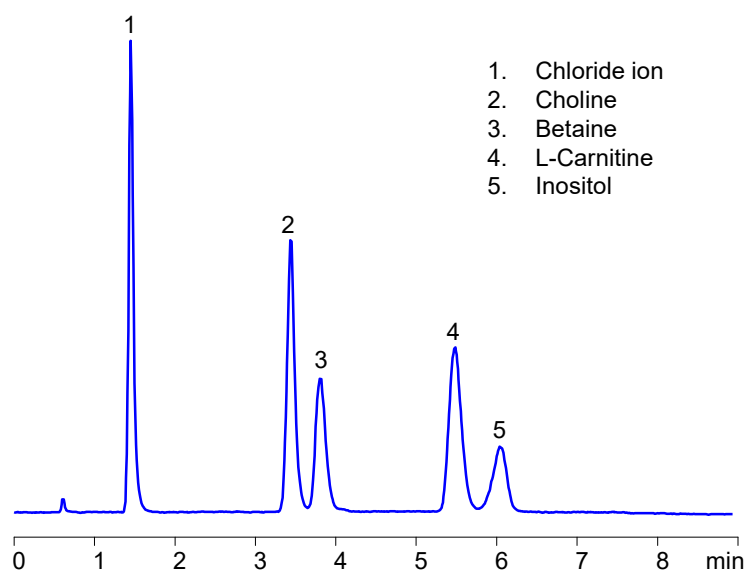
"Scale Your Peaks"

Application Notes

HELIX
CHROMATOGRAPHY

www.helixchrom.com

HILIC HPLC Analysis of Dietary Supplement Composition Containing Choline, Carnitine, Betaine and Inositol on Amaze HD Column



Column: Amaze HD
Dimensions: 3.0x100 mm, 3 μ m, 100A
Mobile phase: ACN/Water/Ammonium formate
Flow rate: 1 ml/min
Detection: ELSD, 45°C

Application Notes

Dietary compositions are complex mixtures of various polarity/acidity/basicity compounds. We are successfully developing applications for the analysis of such complex mixtures. The application below was developed based on the request in one of the HPLC message boards. We are super-efficient in developing robust applications and this one was developed in a couple of hours. The trip to The Vitamin Store took longer than method development. Retention time in HILIC mode is controlled by the amount of ACN, buffer concentration, and buffer pH. Our columns have additional mechanisms of interaction (cation-exchange and anion-exclusion in case of Amaze HD) and this helps with the selectivity of separation. They also let you use less ACN in most cases which improves the solubility of polar analytes.

The presence of a very polar and ionizable group on the surface of Amaze HD allows replacing gradient methods with short isocratic ones. See more at www.helixchrom.com