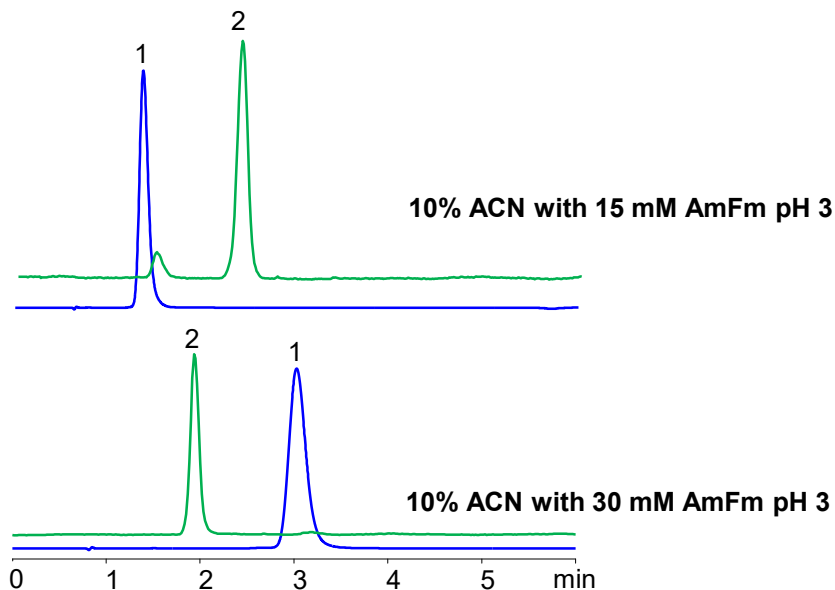
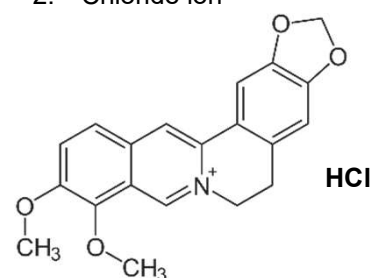


Why Choose Mixed-Mode Chromatography and Columns?



1. Berberine
2. Chloride ion



Column: Heritage MA
Dimensions: 4.6 x 50 mm, 3 μ m, 100A
Mobile phase: ACN/Water/AmFm pH 3
Flow rate: 1 ml/min
Detection: UV 275 nm, ELSD 45°C

Application Notes

There are hundreds if not thousands of columns on the market right now. Most of them are very close in properties and just few of them offer unique selectivity. What are the main benefits of the mixed-mode chromatography:

- The ability to retain polar compounds without ion-pairing reagents
- Analysis of drugs and counterions in one run
- Mass spec compatibility, since ion-pairing reagent is attached to the surface of silica gel
- Independent control of elution for neutral, hydrophobic and hydrophilic, basic, acidic and zwitterionic compounds.
- Perfect peak shape for charged analytes, with no interaction between analytes and residual silanols
- Unique selectivity in HILIC and RP modes
- Ability to change order of elution for various compounds
- Separation of structural isomers
- Full compatibility with 100% water and 100% ACN
- Interchangeable buffers and additives to control selectivity
- High loadability in prep chromatography
- Method robustness

The benefits of mixed-mode will allow you to use these columns for a much wider set of compounds, and let you develop robust methods with unprecedented selectivity.