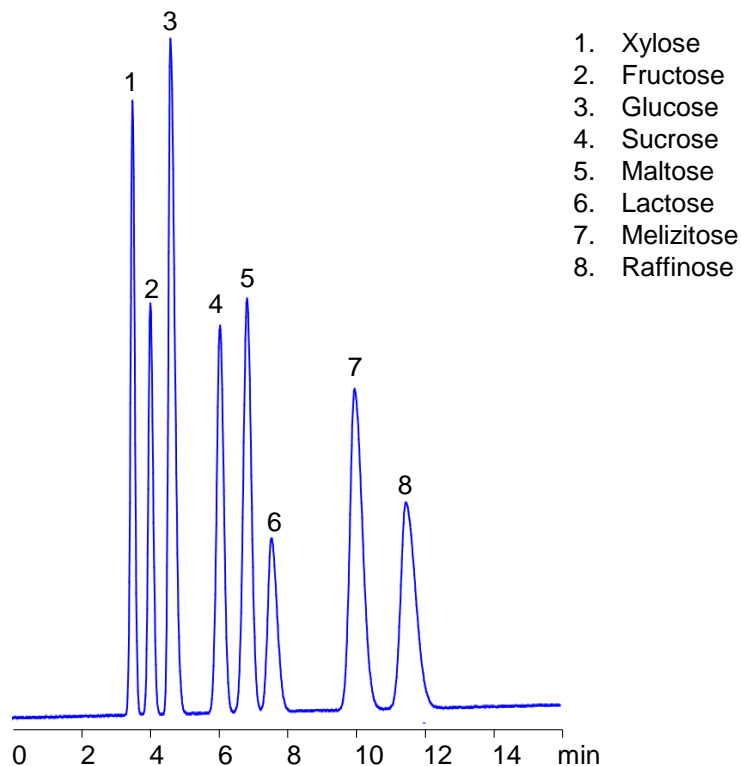


A New Alternative for Analysis of Sugars



Column: Amaze HD
Dimensions: 4.6x150 mm, 3 μ m, 100A
Mobile phase: 77% ACN with 30 mM AmAc pH 4
Flow rate: 1 ml/min
Detection: Corona CAD
Sample: 1 mg/ml
Injection: 2 μ L

Application Notes

Are you analyzing sugars using aminopropyl columns? If you are, you are making column manufacturers very happy, but your consumables budget might be suffering. Aminopropyl columns are notoriously not stable and often require replacement due to poor performance related to hydrolysis of stationary phase in aqueous mobile phases. We have developed a new HILIC method using our Amaze HD HILIC mixed-mode column. Below please find a method for the separation of 8 sugars. Conditions are mild and fully compatible with main detection techniques (ELSD, CAD, RI, and MS). Other sugars can be analyzed on this column. See more at www.helixchrom.com.