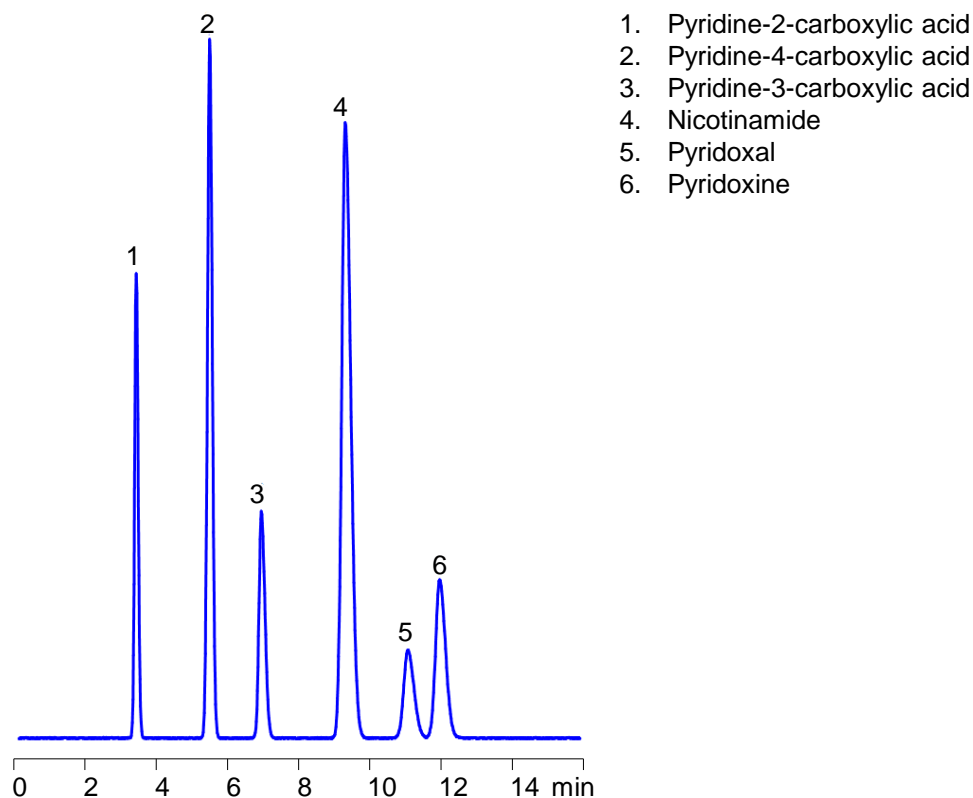


HPLC Separation of Substituted Pyridines on Amaze SC Mixed-Mode Column



Column: Amaze SC
Dimensions: 4.6x150 mm, 5 μ m, 100A
Mobile phase: 5% ACN with 0.25% H_3PO_4
Flow rate: 1 ml/min
Detection: 255 nm

Application Notes

Closely related compounds sometimes require additional efforts in order to achieve baseline separation in HPLC. Amaze SC mixed-mode column allows you to explore small differences in hydrophobic and ionic properties of analytes to achieve much better resolutions than in single mode chromatography. Buffer choice is determined by the detection technique, and in mixed-mode chromatography you can use any buffer or acid within the recommended pH range. You can use any organic or inorganic acid or corresponding buffer to achieve different selectivities of separation. Learn more at www.helixchrom.com