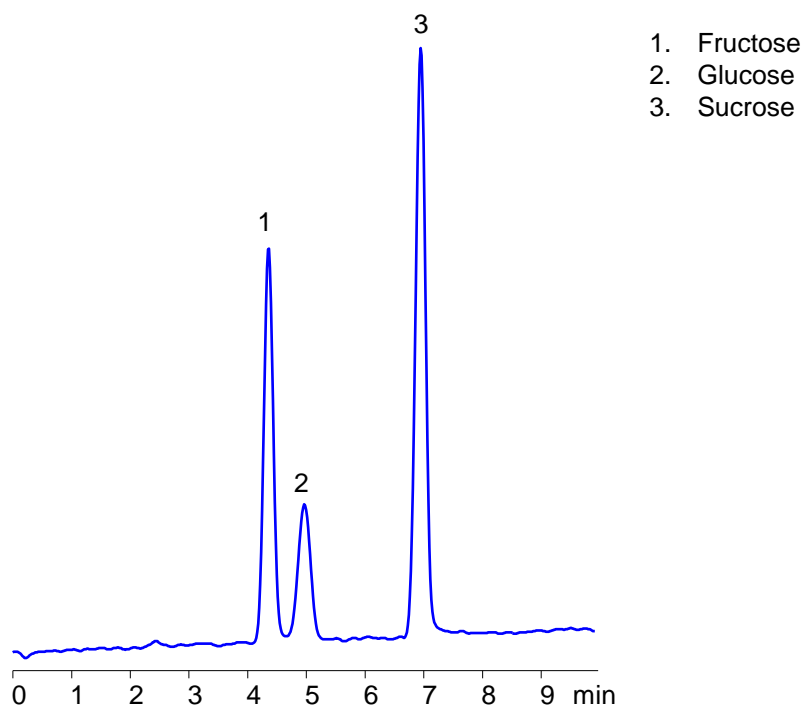


Separation of Fructose, Glucose and Sucrose on Amaze HD HILIC Mixed-Mode Column



Column: Amaze HD
Dimensions: 4.6x150 mm, 3 μ m, 100A
Mobile phase: 80% ACN with 30 mM AmAc pH 4
Flow rate: 1 ml/min
Detection: Corona CAD

Application Notes

HPLC analysis of sugars is usually done with an aminopropyl stationary phase and refractive index detector. Aminopropyl columns are notoriously not stable and undergo hydrolysis in aqueous mobile phases causing over time retention drop and poor peak shape. We have developed an alternative approach for the separation of sugars on the Amaze HD mixed-mode column. The isocratic separation is done in HILIC mode on the Amaze HD column and Corona CAD detector. Our column and method provide a more robust approach to the analysis of sugars. Other sugars can be analyzed on this column (mono-, di, and tri-saccharides). Learn more about our unique products at www.helixchrom.com